


[2016-NEW! Free PassLeader 70-331 VCE and PDF Dumps With New Update Exam Questions (Question 1 – Question 30)

How to pass 70-331 exam at the first time? PassLeader now is offering the free new version of 70-331 exam dumps. The new 209q 70-331 exam questions cover all the new added questions, which will help you to get well prepared for the exam 70-331, our premium 70-331 PDF dumps and VCE dumps are the best study materials for preparing the 70-331 exam. Come to [passleader.com](#) to get the valid 209q 70-331 braindumps with free version VCE Player, you will get success in the real 70-331 exam for your first try. keywords: 70-331 exam,209q 70-331 exam dumps,209q 70-331 exam questions,70-331 pdf dumps,70-331 vce dumps,70-331 braindumps,70-331 practice tests,70-331 study guide,Microsoft Core Solutions of Microsoft SharePoint Server 2013 Exam P.S. Download Free 70-331 PDF Dumps and Preview PassLeader 70-331 VCE Dumps At The End Of This Post!!! (Ctrl+End) Case Study 1: Large Company (Question 1 - Questions 10)BackgroundYou are the SharePoint administrator for a large company. You are responsible for installing and configuring a multi-server SharePoint environment that will be used for information management and collaboration. The company has an Active Directory Domain Services (AD DS) domain. User-specific contact information, including employee photos, is stored and managed in Active Directory. All employees are located in the ActiveUsers organizational unit (OU). The User Profile Synchronization service runs on a server named SERVER1.Business Requirements The SharePoint environment must meet the following business requirements:- Ensure that users can connect to the portal by using the same URL from any location.- Ensure that users can access corporate information from outside the network without using a VPN connection.- Allow users to configure notifications for content changes.- Allow users to follow content creators.- Limit the number of sites and people each user can follow to 100.- Allow content authors to upload documents, large image files, and large video files for consumption by internal and external users.- Allow administrators to promote search query results across the entire company.- Utilize My Sites to share content.- Provide opportunities for social interaction.Technical RequirementsYou must meet the following technical requirements for the SharePoint environment:- Do not exceed the minimum hardware specifications.- Install the minimum supported versions of all software on the servers.- Control the growth of storage utilization.- Maximize existing content database usage before creating new content databases.- Store large files on network attached storage (NAS).- Ensure that all web applications, site collections, files, databases, and components stay within the supported limits.- Configure the User Profile Synchronization service to import user profile data from Active Directory.- Grant the User Profile service account the least permissions necessary to read data.- Ensure that current and future SharePoint environments include the most recent software updates.- Use predefined database naming conventions.- Create individual user sites by using the <https://contoso.com/personal/path>. QUESTION 1You create a User Profile Synchronization connection. You need to grant the necessary permissions to the synchronization account. What should you do? A. Grant the account Full Control on the ActiveUsers OU.B. Grant the account Full Control on the AuthenticatedUsers AD security group.C. Grant the account Read permission on the domain.D. Grant the account the Replicate Directory Changes permission on the domain. Answer: D QUESTION 2Hotspot QuestionYou need to ensure that user-selected subscription content automatically appear on users' My Sites. Which configuration option should you choose? (To answer, select the appropriate option in the answer area.)



Answer:



People

Manage User Properties

Manage User Profiles

Manage User Sub-types


Manage Audiences

Schedule Audience Compilation

Compile Audiences

Manage User Permissions

Manage Policies



Synchronization

Configure Synchronization Connections

Configure Synchronization Timer Job

Configure Synchronization Settings

Start Profile Synchronization




Organizations

Manage Organization Properties

Manage Organization Profiles

Manage Organization Sub-types



My Site Settings

Setup My Sites

Configure Trusted Host Locations

Manage Promoted Sites

Publish Links to Office Client Applications

Manage Social Tags and Notes

Manage Following

QUESTION 3 You need to ensure that content authors can publish the specified files. What should you do? A. Create multiple authoring site collections. Create a site that contains lists, document libraries, and a Pages library. Create an asset library in a new site collection, and enable anonymous access to the library on the publishing web application. B. Create multiple authoring site collections. Create a site that contains lists, document libraries, and a Pages library. Create an asset library in the authoring site collection, and enable anonymous access to the library on the authoring web application. C. Create one authoring site collection. Create a site that contains multiple lists, document libraries, and Pages libraries. Create an asset library in a new site collection, and enable anonymous access to the library on the publishing web application. D. Create multiple authoring site collections. Create a site that contains multiple lists, document libraries, and Pages libraries. Create an asset library in a new site collection, and enable anonymous access to the library on the publishing web application. Answer: B

QUESTION 4 You need to import employee photos into SharePoint user profiles by using the least amount of administrative effort. Which three actions should you perform? (Each correct answer presents part of the solution. Choose three.) A. Define a mapping for the thumbnailPhoto attribute of the Picture user profile property. B. Run the Update-SPUserSolution Windows PowerShell cmdlet. C. Run an incremental synchronization of the User Profile Synchronization service. D. Run a full synchronization of the User Profile Synchronization service. E. Run the Update-SPProfilePhotoStore Windows PowerShell cmdlet. F. Define a mapping for the photo attribute of the Picture user profile property. Answer: ADE

QUESTION 5 Drag and Drop Question You need to install the appropriate versions of Windows Server, Microsoft SQL Server, and Microsoft .NET Framework in the server environment. Which operating system and applications should you install? (To answer, drag the appropriate operating systems and applications to the correct server layers in the answer area. Each operating system or application may be used once, more than once, or not at all. You may need to drag the split bar between panes or scroll to view content.)

.NET Framework 4.0

.NET Framework 4.5

SQL Server 2008 SP2

SQL Server 2008 R2 SP1

SQL Server 2012

Operating system

Windows Server 2008 SP2

Windows Server 2008 R2 SP1

Answer Area

Server layer	Operating system	Application
Web		
Application		
Database		

Answer:

.NET Framework 4.0

.NET Framework 4.5

SQL Server 2008 SP2

SQL Server 2008 R2 SP1

SQL Server 2012

Operating system

Windows Server 2008 SP2

Windows Server 2008 R2 SP1

Answer Area

Server layer	Operating system	Application
Web	Windows Server 2008 R2 SP1	.NET Framework 4.5
Application	Windows Server 2008 R2 SP1	.NET Framework 4.5
Database	Windows Server 2008 R2 SP1	SQL Server 2008 R2 SP1

www.passleader.com

QUESTION 6You copy the content of the SharePoint installation media and software updates to your hard drive. You need to meet the setup requirements for future SharePoint server installations. What should you do? A. Extract the content of each file to the Updates folder by running the /extract:<path> command.B. Upgrade the installation media by running the /lang:<lcid> command. C. Extract the content of each file to the Setup folder by running the /extract:<path> command.D. Extract the content of each file to the PrerequisiteInstallerFiles folder by running the / extract:<path> command. Answer: A QUESTION 7You need to implement corporate sizing and performance guidelines for general usage. Which three actions should you perform? (Each correct answer presents part of the solution. Choose three.) A. For the Remote BLOB Storage (RBS) storage subsystem on network attached storage (NAS), limit the maximum time-to-first-byte (TTFB) of any response from the NAS to 100 milliseconds.B. Limit the maximum size of each content database to 4 TB.C. For the Remote BLOB Storage (RBS) storage subsystem on network attached storage (NAS), limit the maximum time-to-first-byte (TTFB) of any response from the NAS to 20 milliseconds.D. Limit the number of documents in each document library to 20 million.E. Limit the number of documents in each content database to 10 million.F. Limit the maximum size of each content database to 200 GB. Answer: CEF QUESTION 8Hotspot QuestionYou are setting up individual user sites. You need to ensure that site addresses follow corporate guidelines. Which command should you use? (To answer, select the appropriate command in the answer area.)

SharePoint

BROWSE

WEB APPLICATIONS

New

Extend

Delete

General Settings

Manage Features

Managed Paths

Service Connections

Authentication Providers

Self-Service Site Creation

Contribute

Manage

Security

Answer:

SharePoint

BROWSE

WEB APPLICATIONS

New

Extend

Delete

General Settings

Managed Paths

Service Connections

Authentication Providers

Self-Service Site Creation

Contribute

Manage

Security

QUESTION 9You need to ensure that service applications meet the technical requirements by using the least amount of administrative effort. What should you do? A. Use the Farm Configuration Wizard to add service applications.B. Use Windows PowerShell to configure service applications.C. Use the SharePoint Products Configuration Wizard to complete the server configuration.D. In Central Administration, manually create each service application. Answer: B QUESTION 10Hotspot Question You need to ensure that corporate search guidelines are followed. What rule should you create? (To answer, select the appropriate option from each drop- down list in the answer area.)

Rule type	Action or condition

Rule type	Action or condition
<div>▼</div>	<div>▼</div>
crawler impact rule	Add Promoted Results
query rule	Add Result Blocks
	Advanced Query Text Match
	Query Commonly Used in Source
	Result Type Commonly Clicked

Answer:

Rule type	Action or condition
<div>▼</div>	<div>▼</div>
crawler impact rule	Add Promoted Results
query rule	Add Result Blocks
	Advanced Query Text Match
	Query Commonly Used in Source
	Result Type Commonly Clicked

Case Study 2: Photo Processing (Question 11 - Questions 25)BackgroundGeneral BackgroundYou are a SharePoint administrator for an online photo-processing company named Contoso, Ltd. Contoso's primary customers are professional photographers. The Contoso SharePoint 2013 environment includes the sites described in the following table.

Description	URL	U
Public website	www.adatum.com	Photographers up print-processing o orders.
Intranet site	intranet.contoso.com	Contoso employe colleagues and st files.

The intranet site includes a document library for each employee in which the employee stores photos. Technical BackgroundThe SharePoint environment contains five front-end web servers that use Windows Network Load Balancing (NLB) with NLB affinity set to None. The company maintains all processed photos in the SharePoint content database. The content database uses RAID 5 storage. Photo files that are more than one year old are rarely viewed. Employees actively use the default self-service site creation feature. The network infrastructure contains an Active Directory Domain Services (AD DS) environment. All servers run Windows Server 2008 R2. The internal AD DS domain is named contoso.com. Active Directory Federation Services (AD FS) is deployed in the LAN. Two AD FS proxy servers are deployed in the perimeter network. Users log on to client computers by using the syntax username@contoso.com. Contoso has a lab environment that includes a dedicated AD DS environment and SharePoint 2013. The main lab SharePoint site is located at lab.intranet.contoso.com. A test site for a project named Project2 exists under lab.intranet.contoso.com/corp. The default self-service site creation feature is enabled for the test site. Contoso has a development team that maintains the public website, maintains the intranet site, and creates SharePoint apps. The development team recently created a SharePoint-hosted app named App1 that converts .tif files to .png files. Future DevelopmentContoso is forming a new corporation named Proseware, Inc. that will sell SharePoint apps. The company has acquired the proseware.com domain name. Contoso is preparing to federate with Microsoft Office 365 and will use the proseware.com domain for Office 365 services. Technical RequirementsYou must meet the following technical requirements:- App1 must have access to each employee's photo document library.- App1 must use Windows Authentication.- Each front-end web server must use a single IP address for all SharePoint sites and apps on that server.- All SharePoint sites and apps must listen on port 9000.- Office 365 must use single sign-on (SSO).The company has established the following new monitoring requirements for the production SharePoint environment:- Monitor whether a large number of documents are checked out.- Monitor whether a large number of unpublished items are being requested.The company has established the following new monitoring requirements for Project2:- Monitor changes to a value in a specific registry key.- Monitor the SharePoint cache hit ratios.- Perform monitoring only from 9:00 A.M. to 3:00 P.M. daily.Existing ProblemsMultiple authentications often occur when users log on to and navigate in SharePoint. Users have reported some small delays accessing data. The content database is currently stored on Serial Attached SCSI (SAS) disk drives and is growing at a rapid pace. The following related issues currently exist:- SharePoint is not performing as well as it was when the content database was smaller.- Storage costs to house the photo files are too expensive.- Scanned contracts are stored in binary large object (BLOB) cache

storage.The BLOB cache is routinely filling up. End users are reporting poor performance when viewing scanned contracts.
QUESTION 11Hotspot QuestionYou need to choose the Performance Monitor counter to use to meet the new monitoring requirements for the production environment. Which performance counter should you use? (To answer, select the appropriate counter in the answer area.)

SharePoint Publishing Cache

Publishing cache flushes / second

Publishing cache hit count

Publishing cache hit ratio

Publishing cache hits / sec

Publishing cache miss count

Publishing cache misses / sec

Total number of cache compactions

www.passleader.com

Answer:

SharePoint Publishing Cache

Publishing cache flushes / second

Publishing cache hit count

Publishing cache hit ratio

Publishing cache hits / sec

Publishing cache miss count

Publishing cache misses / sec

Total number of cache compactions

www.passleader.com

QUESTION 12Drag and Drop QuestionYou need to design a SharePoint storage architecture to resolve the existing storage issues. Which storage architecture should you use? (To answer, drag the appropriate storage types to the correct location or locations in the answer area. Each storage type may be used once, more than once, or not at all. You may need to drag the split bar between panes or scroll to view content.)

RAID 10 storage on Serial ATA (SATA) disk drives

RAID 10 storage on Fibre Channel (FC) disk drives

Remote BLOB Storage on Serial ATA (SATA) disk drives

Remote BLOB Storage on Fibre Channel (FC) disk drives

www.passleader.com

Answer Area

Content	Storage type
SharePoint content database	
Photo files	

Answer:

RAID 10 storage on Serial ATA (SATA) disk drives

RAID 10 storage on Fibre Channel (FC) disk drives

Remote BLOB Storage on Serial ATA (SATA) disk drives

Remote BLOB Storage on Fibre Channel (FC) disk drives

www.passleader.com

Answer Area

Content	Storage type
SharePoint content database	RAID 10 storage on Fibre Channel (FC) disk drives
Photo files	Remote BLOB Storage on Serial ATA (SATA) disk drives

QUESTION 13You need to create a new site collection while maintaining the ability for users to create their own sites. What should you do? A. Use a path-based site collection and a single farm that contains all the web applications.B. Create a host-named site collection and use a single farm that contains all the web applications.C. Use a path-based site collection and alternate access mappings.D. Create a host-named site collection and use a single farm that contains a single consolidated web application. Answer: B QUESTION 14You need to meet the Project2 monitoring requirements. What should you do? A. Create a user-defined data collector set.B. Monitor only startup event trace sessions.C. Monitor only event trace sessions.D. Use a system-defined data collector set. Answer: A QUESTION 15Hotspot QuestionYou are configuring the IIS website settings for a

SharePoint application in the Create New Web Application wizard. You need to ensure that the settings meet the technical requirements. Which configuration option should you change? (To answer, select the appropriate option in the answer area.)

IIS Web Site

Choose between using existing IIS web site or new one to serve the Microsoft SharePoint Foundation application.

If you select an existing site, that web site must exist on all servers in the farm and have the same name, or this action will not succeed.

If you opt to create a new site, it will be automatically created on all servers in the farm. If an IIS setting that you wish to change is not shown here, you can use this option to create the basic site, then update it using the standard IIS tools.

Answer: IIS Web Site

Choose between using an existing IIS web site or create a new one to serve the Microsoft SharePoint Foundation application.

If you select an existing IIS web site, that web site must exist on all servers in the farm and have the same name, or this action will not succeed.

If you opt to create a new IIS web site, it will be automatically created on all servers in the farm. If an IIS setting that you wish to change is not shown here, you can use this option to create the basic site, then update it using the standard IIS tools.

☐ Use an existing IIS web site
Default Web Site

☒ Create a new IIS web site

Name
SharePoint - App1

Port
9000

Host Header
intranet.contoso.com

Path
d:\data\app1

www.passleader.com

QUESTION 16 You need to configure a managed path to support Project2. What should you do? A. Use an explicit inclusion for /corp.B. Create a new IIS virtual directory under the /corp site.C. Create a new IIS virtual directory under the default website.D. Use a wildcard inclusion for /corp. Answer: D QUESTION 17 You need to implement Office 365 authentication. What should you do? A. Add only adatum.com as an Office 365 SSO domain and use the SupportMultipleDomain parameter.B. Create an AD DS domain named proseware.com and join the AD FS servers to the proseware.com domain.C. Add adatum.com and proseware.com as Office 365 SSO domains and use the SupportMultipleDomain parameter.D. Add only proseware.com as an Office 365 SSO domain and use the SupportMultipleDomain parameter. Answer: C QUESTION 18 You need to select the appropriate authentication method for App1. What should you do? A. Use classic mode authentication and set the authentication type to NTLM.B. Use classic mode authentication and set the authentication type to Kerberos.C. Use the SharePoint server-to-server security token service (STS).D. Use the Open Authorization 2.0 (OAuth 2.0) web authorization protocol. Answer: C QUESTION 19 You need to resolve the authentication issue that occurs in the SharePoint environment. What should you do? A. Deploy the Secure Store Service.B. Use classic mode authentication and set the authentication type to NTLM.C. Use the Distributed Cache service.D. Use classic mode authentication and set the authentication type to Kerberos. Answer: C QUESTION 20 Drag and Drop Question You are troubleshooting the problems with viewing scanned contracts. You need to select the appropriate Performance Monitor counters to use. Which performance counters should you use? (To answer, drag the appropriate counters to the correct location or locations in the answer area. Each counter may be used once, more than once, or not at all. You may need to drag the split bar between panes or scroll to view content.)

Answer Area	
Purpose	Performance Monitor counter
Monitor how full the cache is	
Monitor the removal of cache contents	

Blob Cache fill ratio
Blob cache flushes/second
Disk Cache fill ratio
Total number of cache compactions
Total objects in Blob Cache

www.passleader.com

Answer:

Answer Area	
Purpose	Performance Monitor counter
Monitor how full the cache is	Blob Cache fill ratio
Monitor the removal of cache contents	Total number of cache compactions

Blob Cache fill ratio
Blob cache flushes/second
Disk Cache fill ratio
Total number of cache compactions
Total objects in Blob Cache

www.passleader.com

QUESTION 21 You need to implement Office 365 authentication. What should you do? A. Create an AD DS domain named proseware.com and join the AD FS servers to the proseware.com domain. B. Add a DNS CNAME record for www.proseware.com and point it to www.adatum.com. C. Deploy an AD FS proxy for the proseware.com domain. D. Add proseware.com as an Office 365 SSO domain and update all user principal names (UPNs) to also use proseware.com. Answer: D

QUESTION 22 You need to resolve the authentication issue that occurs in the SharePoint environment. What should you do? A. Use classic mode authentication and set the authentication type to Kerberos. B. Deploy the Secure Store Service. C. Use the Open Authorization 2.0 (OAuth 2.0) web authorization protocol. D. Use the Distributed Cache service. Answer: D

QUESTION 23 You need to implement Office 365 authentication. What should you do? A. Create a two-way trust between proseware.com and adatum.com. B. Deploy an AD FS proxy for the proseware.com domain. C. Create an AD DS domain named proseware.com and join the AD FS servers to the proseware.com domain. D. Add adatum.com and proseware.com as Office 365 SSO domains and use the SupportMultipleDomain parameter. Answer: D

QUESTION 24 You need to resolve the authentication issue that occurs in the SharePoint environment. What should you do? A. Deploy the Secure Store Service. B. Use classic mode authentication and set the authentication type to Kerberos. C. Set the NLB client affinity to Single. D. Remove the Network Load Balancing feature from all of the servers. Answer: C

QUESTION 25 You need to resolve the authentication issue that occurs in the SharePoint environment. What should you do? A. Remove the Network Load Balancing feature from all of the servers. B. Set the NLB client affinity to Single. C. Deploy the Secure Store Service. D. Use classic mode authentication and set the authentication type to NTLM. Answer: B

Case Study 3: Blue Yonder Airlines (Question 26 - Questions 35)

Background

General Background

You are the SharePoint administrator for Blue Yonder Airlines. The company currently has a SharePoint 2010 environment. It is your responsibility to install and configure a SharePoint 2013 environment that will be used for information management and collaboration, both internally and with external partners. You must also migrate the existing SharePoint environment to SharePoint 2013. Blue Yonder works with several external partners, including those described in the following table.

Partner company	Role
Wingtip Toys	Designers of toy airplanes and other items sold by Blue Yonder.
Tailspin Toys	Manufacturers of all toys sold by Blue Yonder.
Margie's Travel	Staffing company that provides just-in-time staffing options for air and ground personnel.

Blue Yonder collaborates with Wingtip Toys and Tailspin Toys to design, manufacture, and sell airline-related toys to customers. The Blue Yonder board of directors expects the collaborative design process to become more effective as a result of implementing

SharePoint 2013. Technical Background All existing servers run Windows Server 2008 R2. The network infrastructure contains an Active Directory Domain Services (AD DS) environment. The internal AD DS domain is named blueyonderairlines.com. User-specific contact information is stored and managed in AD DS. All employees are located in the ActiveUsers organizational unit (OU). Active Directory Federation Services (AD FS) is deployed in the LAN. Two AD FS proxy servers are deployed in the perimeter network. Users log on to client computers by using the syntax username@blueyonderairlines.com. Blue Yonder provides access to the SharePoint environment to partners through individual URLs for each partner company. Each partner company has a dedicated web application and site collection. The following table describes the access URLs.

Partner company	URL to access
Wingtip Toys	https://wingtip toys.blueyonderairlines.com
Tailspin Toys	https://tailspin toys.blueyonderairlines.com
Margie's Travel	https://margies travel.blueyonderairlines.com

In preparation for the upgrade you maximize the default upload limits for each web application. Blue Yonder has an existing managed metadata service containing managed metadata and content types. The content types have workflows. You create a new managed metadata service connection for the Wingtip Toys web application. A workflow created by Blue Yonder moves information through the product lifecycle. Each access URL specifies a separate web application, site collection, and site.

Business Requirements The SharePoint environment must meet the following business requirements:- Provide an environment where toy design, manufacturing, and sales information can be shared between Blue Yonder and partner companies.- Provide a training site for internal and external users.- Allow content authors of training materials to upload documents, large image files, and large video files for consumption by internal and external users.- Allow users to sort content by category.- Ensure that users from Wingtip Toys or Tailspin Toys can access content only in their own areas of the portal.- Prevent users from Wingtip Toys and Tailspin Toys from adding terms or creating enterprise keywords.- Content types and keywords must be shared between sites, site collections, and web applications.- Simplify search processes by collecting unique characteristics and information about each uploaded item.- Allow administrators to promote search query results across the entire environment.- Allow resource coordinators from Blue Yonder to find temporary staffing options from Margie's Travel contractors and employees.- Provide opportunities for social interaction between employees, contractors, and external contacts to promote idea generation and socialization.- Utilize site feeds on all collaborative sites.- Replicate profile information in the <https://blueyonderairlines.com> site to partner sites.- Ensure that third-party vendors can read and modify documents. For publishing sites, use only friendly URLs that do not contain anything other than the direct address. Avoid URL constructions such as /Lists/Posts/Post.aspx?ID=568

Site content must meet the following requirements: Individual training videos must be in single files, and presented on the training site. Changes to confidential documents must be logged.

Technical Requirements You must meet the following technical requirements:- Store all large files outside of the SharePoint content database or databases.- All servers must run on virtual machines.- Ensure that search queries are handled by web servers.- Ensure that all lists support multiple content types.

QUESTION 26 You need to ensure that all required sites can use microblogging features for collaboration. Which two actions should you perform? (Each correct answer presents part of the solution. Choose two.)

A. Enable the Site Feeds feature on each My Site.

B. Enable the Following Content feature on each team site.

C. Enable self-service site creation on the web application that contains the team sites.

D. Enable the Site Feeds feature on each team site.

Answer: BD

QUESTION 27 Drag and Drop Question You need to ensure that profile information about contractors and employees is available in search results. Which three actions should you perform in sequence? (To answer, move the appropriate actions from the list of actions to the answer area and arrange them in the correct order.)

Answer Area

Enable continuous crawl on the Blue Yonder People Search content source.

Enable continuous crawl on the Margie's Travel People Search content source.

As the site collection administrator, configure service application settings for the site collection.

Select the Search service application that contains https://margiestravel.blueyonderairlines.com.

Select the Search service application that contains https://blueyonderairlines.com.

Disable continuous crawl on the Margie's Travel People Search content source.

As the Search service administrator, configure service application settings in Central Administration.

www.passleader.com

Answer:

Answer Area

As the Search service administrator, configure service application settings in Central Administration.

Select the Search service application that contains https://margiestravel.blueyonderairlines.com.

Enable continuous crawl on the Margie's Travel People Search content source.

Enable continuous crawl on the Blue Yonder People Search content source.

As the site collection administrator, configure service application settings for the site collection.

Select the Search service application that contains https://blueyonderairlines.com.

Disable continuous crawl on the Margie's Travel People Search content source.

www.passleader.com

QUESTION 28Drag and Drop QuestionYou need to configure Search to support resource coordinators. Which three actions should you perform in sequence? (To answer, move the appropriate actions from the list of actions to the answer area and arrange them in the correct order.)

Answer Area	
Sign in to Central Administration as the Search service application administrator. Configure the service application settings.	
Configure the Type to include People Search Results .	
Configure the Type to include SharePoint Search Results .	
Sign in as the site collection administrator. Configure Site Settings in the Publishing site collection.	
Add a new results source.	

www.passleader.com

Answer:

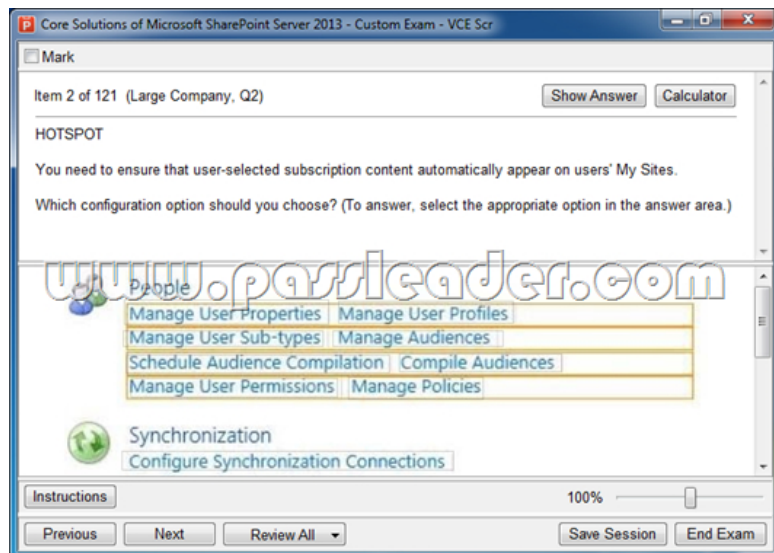
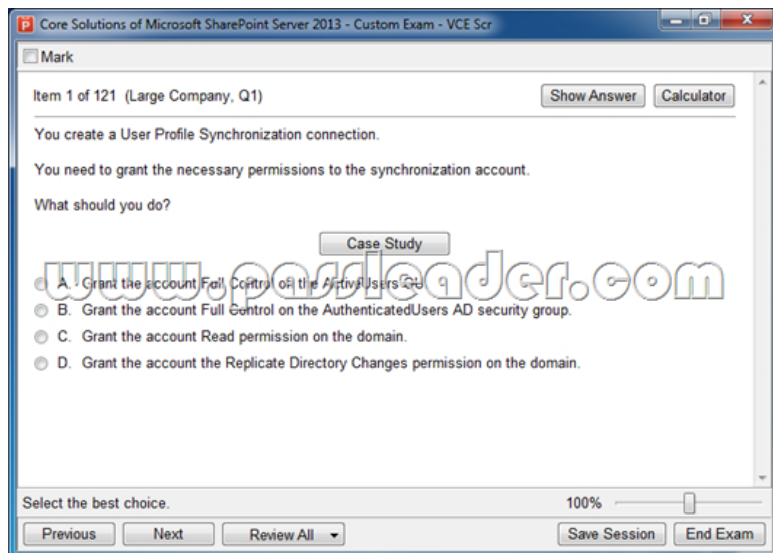
Answer Area	
Sign in to Central Administration as the Search service application administrator. Configure the service application settings.	Sign in to Central Administration as the Search service application administrator. Configure the service application settings.
Configure the Type to include People Search Results .	Add a new results source.
Configure the Type to include SharePoint Search Results .	
Sign in as the site collection administrator. Configure Site Settings in the Publishing site collection.	Configure the Type to include People Search Results .
Add a new results source.	

www.passleader.com

QUESTION 29 You need to configure the existing managed metadata service application for term store management. Which three actions should you perform? (Each correct answer presents part of the solution. Choose three.) A. Grant the Read and Restricted Write Access to Term Store permission to the Wingtip Toys and Tailspin Toys application pool accounts. B. Grant the Full Access to Term Store permission to the Blue Yonder application pool account. C. Add the managed metadata service connection to the application proxy group that is assigned to all three web applications. D. Grant the Read Access to Term Store permission to the Local Farm account. E. Grant the Read and Restricted Write Access to Term Store permission to the Local Farm account. Answer: BCD

QUESTION 30 You need to specify hardware and software requirements for web servers used by the SharePoint environment. Which two minimum requirements should you specify? (Each correct answer presents part of the solution. Choose two.) A. Virtual machine running Windows Server 2012 B. 4-core virtual machine C. 6-core virtual machine D. Physical host running Windows Server 2008 R2 E. Physical host running Windows Server 2012 F. Virtual machine running Windows Server 2008 R2 Answer: BF

Download Free 70-331 PDF Dumps From Google Drive:
https://drive.google.com/open?id=0B-ob6L_QjGLpfkRkZ09sMkpVYWh0T2hkNmVlbjgyOFdhXJzY0t5Q3pMU0QwNEpqRVVrUIE (Explanation For Every Question Is Available!) PassLeader 70-331 VCE Dumps Screenshots:



Download New 70-331 VCE Dumps From PassLeader: <http://www.passleader.com/70-331.html> (Full Version)